

Nominated as an Important Roadside Station



Roadside Station

# Ichigo-no-Sato Yoshimi

This is the fifteenth roadside station registered in Saitama Prefecture. "Wanpaku Plaza" is a popular spot where the "Product Promotion Center" and strawberry-themed playground equipment can be found. You can enjoy a meal at shops like "Raku-raku-an" and "Shotengai Shopping Street" that offer udon made with Jigona produced in Yoshimi-machi. There is also a farmer's market for you to enjoy.



Wanpaku Plaza



Ichigo-no-Sato Product Promotion Center

For sale are products made with Yoshimi Strawberries, such as strawberry Karinto and handmade strawberry jam. The seasonal strawberry Daifuku is an especially popular product that always sells out.

Kubota 1737 TEL 0493-53-1530

<http://www.ichigonosato.com>

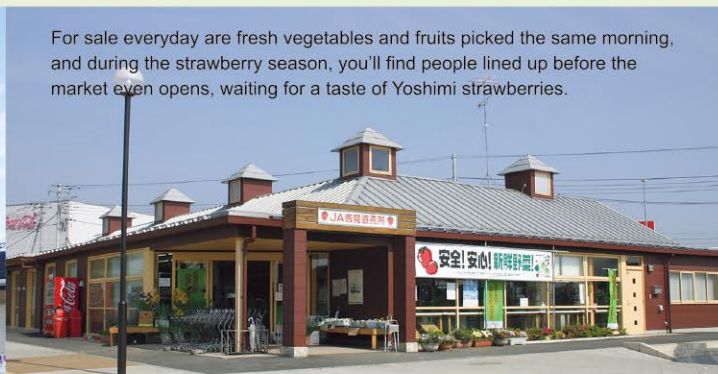
■ Product Promotion Center 9:00am-5:00pm

■ Dining 11:00am-3:00pm (weekdays) 11:00am-4:00pm (weekends and holidays)

G-6

# JA Yoshimi Market

For sale everyday are fresh vegetables and fruits picked the same morning, and during the strawberry season, you'll find people lined up before the market even opens, waiting for a taste of Yoshimi strawberries.



Kubota 1762-1 (Roadside station) / TEL 0493-54-8727

April-September 9:30am-6:00pm, October-March 9:30am-5:30pm

Closed December 30th to January 2nd

G-6



Strawberry Curry Udon



Vegetable Tempura Udon



Meat Sauce Udon



Vegetable Champion Udon

## Raku-raku-an (Dining)

Their specialty is their Jigona Udon made with "Sato-no-Sora" Jigona produced in Yoshimi-machi. The delicious noodles and soup are made with special care.